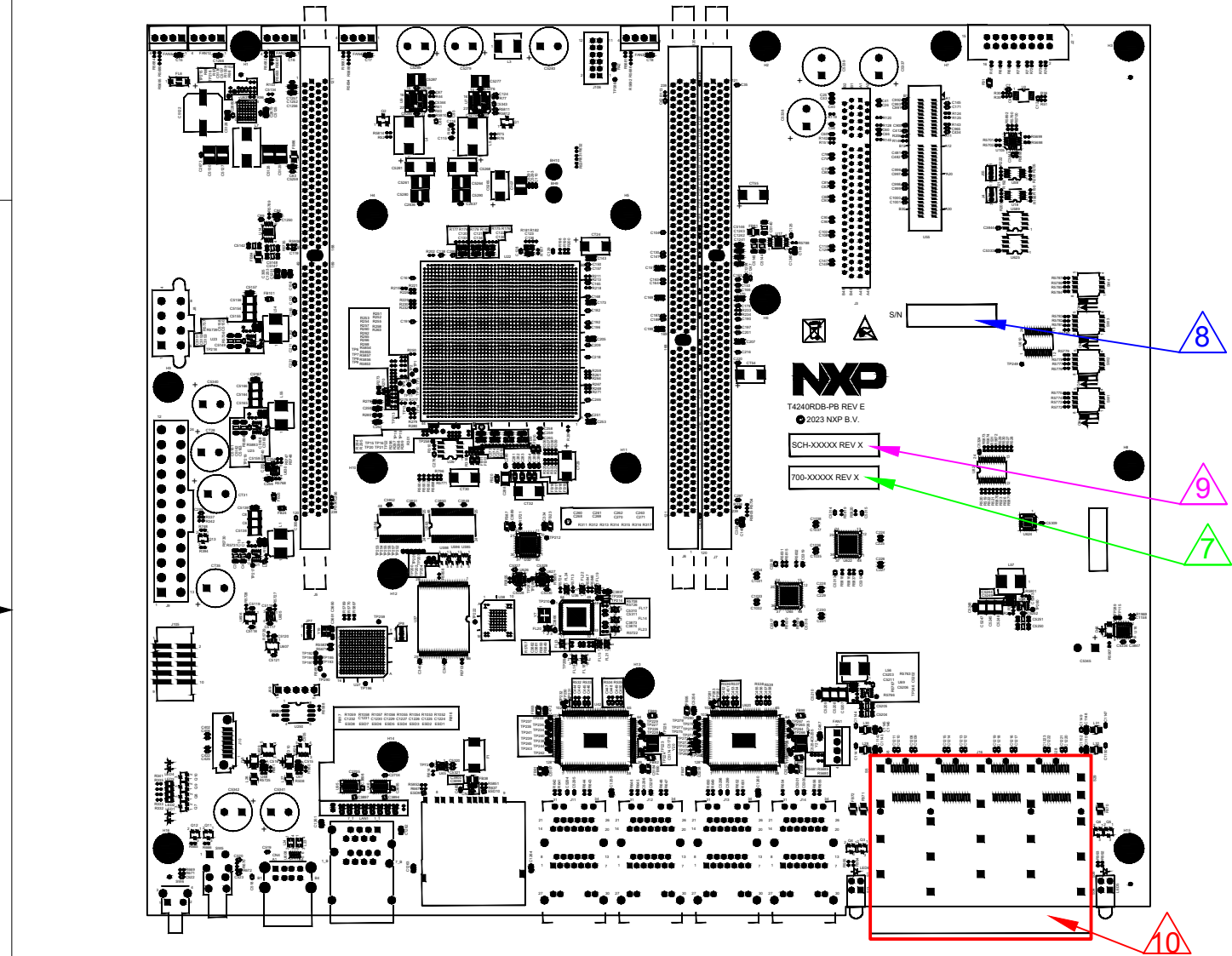


NOTES : TRIANGLE SYMBOLS IDENTIFY NOTES ON THIS DRAWING.



NOTES:

- ALL COMPONENTS MUST BE ABLE TO WITHSTAND THE Pb-FREE ASSEMBLY PROFILES DESCRIBED IN IPC/JEDEC J-STD-020C (LATEST VERSION)
- WORKMANSHIP SHALL CONFORM TO IPC-A-610 (LATEST REVISION) - CLASS 2 STANDARD.
- PART SUBSTITUTION CRITERIA : -
ALL COMPONENT SUBSTITUTIONS, INCLUDING THE PCB, MUST BE APPROVED AND DOCUMENTED BY NXP.
- MAXIMUM LEAD PROTRUSION ON PRIMARY AND SECONDARY SIDE OF PRINTED WIRING BOARD IS PER IPC-A-610 (LATEST REVISION).
- IN CASES OF CONFLICT, ALL PLACEMENT LOCATIONS ARE TO BE GOVERNED BY THE X-Y CENTROID FILE (CEN-27749), UNLESS EXPLICITLY STATED IN THIS ASSEMBLY DRAWING. SILKSCREEN REFERENCE DESIGNATORS ARE INCLUDED FOR CONVENIENCE ONLY. DNP-27749 IS PROVIDED AS A SUPPLEMENTARY DOCUMENT ALSO.
- MEASURE THE PCB WARPAGE LEVEL AT ALL THE STAGES WHICH INCLUDES PCB INCOMING QUALITY INSPECTION, PCBA - IN PROCESS QUALITY INSPECTION AND OUTGOING QUALITY INSPECTION. REFER IP-A-600 AND IPC-TM650 (2.4.22 BOW & TWIST PERCENTAGE CALCULATION).

PLACE PRINTED ASSEMBLY/REVISION LABEL (805-75115) WHERE SHOWN.
PRINTED ON THIS LABEL MUST BE THE AGILE REVISION OF THE PWA 700-27749,
NOT THE REVISION OF THIS DRAWING.

PLACE PRINTED SERIAL NUMBER LABEL (805-75481) WHERE SHOWN.

PLACE PRINTED SCH/REVISION LABEL (805-75918) WHERE SHOWN.
PRINTED ON THIS LABEL MUST BE THE AGILE REVISION OF THE SCH-27749,
NOT THE REVISION OF THIS DRAWING.

ASSEMBLE SFP CAGE (210-81644) IN THE MARKED LOCATION AT J16. ENSURE IT IS
SOLDERED ON BOTTOM SIDE.

NOTE: THIS PART IS ALREADY AVAILABLE UNDER 750-27749.

SOLDER PROCESS	
Pb FREE	<input checked="" type="checkbox"/> YES <input type="checkbox"/> NO
NO-CLEAN	<input type="checkbox"/> YES <input checked="" type="checkbox"/> NO


PRIMARY SIDE

RoHS : ALL PARTS, MATERIALS AND FINISHED ASSEMBLY SHALL MEET THE RoHS COMMISSION DELEGATED DIRECTIVE (EU) 2015 / 863 OF MARCH 31 2015 AMENDING ANNEX II TO DIRECTIVE 2011 / 65 / EU. A CERTIFICATE OF COMPLIANCE IS REQUIRED UPON REQUEST.

REACH : ALL PARTS, MATERIALS AND FINISHED ASSEMBLY SHALL NOT CONTAIN ANY OF THE SUBSTANCES OF VERY HIGH CONCERN (SVHC) ABOVE THE THRESHOLD VALUE PER THE CURRENT ECHA LIST OF SVHC'S, AND WITH THE ANNEX XIV OF REACH DIRECTIVE 76 / 769 / EEC.. A CERTIFICATE OF COMPLIANCE IS REQUIRED UPON REQUEST.

UNLESS OTHERWISE SPECIFIED DIMENSIONS ARE IN INCHES. TOLERANCES ARE: DECIMALS .XX ±.020 .XXX ±.010 ✓ RMS ALL MACHINED SURFACES BREAK ALL SHARP EDGES AND CORNERS, REMOVE BURRS. UNDERLINED DIM. NOT TO SCALE. THIRD ANGLE ORTHOGRAPHIC PROJECTION IS USED.	
MATERIAL	FINISH
HEAT TREAT	

PART NO. 700-27749	
THIS DOCUMENT CONTAINS INFORMATION PROPRIETARY TO NXP AND SHALL NOT BE USED FOR ENGINEERING DESIGN, PROCUREMENT OR MANUFACTURE IN WHOLE OR IN PART WITHOUT THE CONSENT OF NXP	
--- PUBLI (PUBLIC INFORMATION) --- X- FIJD (NXP INTERNAL USE ONLY) --- FCP (FREESCALE CONFIDENTIAL PROPRIETARY)	
APPROVALS	
DRAWN Jeevananth C	DATE 04/15/2025
CHECKED Peter N	04/15/2025
DESIGN ENGINEER Gary M	04/15/2025



Semiconductors

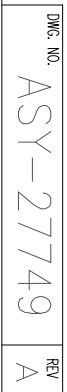
6501 WILLIAM CANNON DRIVE
AUSTIN, TEXAS 78735-8598 USA

TITLE

PWB ASSEMBLY
T424ORDB-PB

SIZE	FILE NAME	DWG. NO.	REV
B	ASY-27749.DXF	ASY-27749	A
SCALE	DO NOT SCALE DRAWING		SHEET 1 OF 2

A



A

